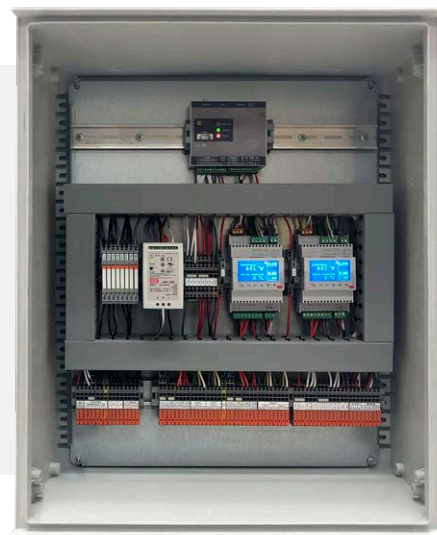


bluon Control Panel PRO

Introducing the Bluon Control Panel Pro Series.

Bluon is constantly innovating to create viable solutions that enable and empower commercial contractors to better serve their customers. The Bluon Control Panel Pro allows Contractors and End-Users to retrofit challenging commercial R-22 units to Bluon TdX 20 with far less risk and far better outcomes:

- ✓ Relatively easy to install
- ✓ Minimizes wiring and electronic installs in the field
- ✓ Dramatically reduces field install errors
- ✓ Cost effective | Reduces field man-hours substantially
- ✓ Improves unit reliability and efficiency
- ✓ Remote access and monitoring capable for preventive maintenance, quality assurance, early problem warning, and troubleshooting



The Bluon Control Panel Pro Features:

- Multiple configurations allowing control of 1 - 6 Electronic Expansion Valves and up to two (2) Pump Down Circuits
- Carel EVD Electronic Expansion Valve (EXV) Drivers with removable LCD Displays
- AC/DC 24V Power Supply with Battery Backup (EXVs run on 24V DC)
 - Mitigating AC power problems
- TOPJOB®S Terminal Blocks with Levers for easy + tool-less wire-installation/troubleshooting
- WAGO Fuse Terminal Blocks with LED indicator for quickly identifying blown fuses
- WAGO Universal Relays (Input Voltage 24-230V AC/DC) with status indicators
- Housed Lightweight IP65 Fiberglass Enclosure
- Bluon 24/7 Remote Live Technician Support
- Remote monitoring options available on all configurations
 - Suction Pressure + Temps (standard with pump down configurations)
 - High Side Pressure + Liquid Line Temp (standard with pump down configurations)
 - Superheat and Subcool (standard with pump down configurations)
 - Return Air / Supply Air Temps, Capacity, and Power w/ 3-phase Voltage + Amps

SKU	BASE DESCRIPTION	TYPICAL COMPATIBILITY
CPP-1E-0PD-0	One (1) EXV	Smaller (20-40 Ton) IntelliPaks, Voyagers, etc.
CPP-2E-0PD-0	Two (2) EXVs	Smaller (20-40 Ton) IntelliPaks, Voyagers, etc.
CPP-3E-0PD-0	Three (3) EXVs	Various Units
CPP-4E-0PD-0	Four (4) EXVs	Mid-Large Indoor Package Water-Cooled Units
CPP-5E-0PD-0	Five (5) EXVs	Mid-Large Indoor Package Water-Cooled Units
CPP-6E-0PD-0	Six (6) EXVs	Mid-Large Indoor Package Water-Cooled Units
CPP-1E-1PD-B	One (1) EXV + One (1) Pump-down circuit + Basic Monitoring	Smaller (20-40 Ton) IntelliPaks, Voyagers, etc.
CPP-2E-1PD-B	Two (2) EXVs + One (1) Pump-down circuits + Basic Monitoring	Smaller (20-40 Ton) IntelliPaks, Voyagers, etc.
CPP-2E-2PD-B	Two (2) EXVs + Two (2) Pump-down circuits + Basic Monitoring	Mid-sized (40-90 Ton) IntelliPaks, Voyagers, etc.
CPP-4E-2PD-B	Four (4) EXVs + Two (2) Pump-down circuits + Basic Monitoring	Larger (90-130 Ton) IntelliPaks

PARTS	EEV MODELS (CPP-)						EEV + PUMP DOWN MODELS (CPP-)			
	1E-0PD-0	2E-0PD-0	3E-0PD-0	4E-0PD-0	5E-0PD-0	6E-0PD-0	1E-1PD-B	2E-1PD-B	2E-2PD-B	4E-2PD-B
Carel EVD EVO Single	1	2	1	-	1	-	1	-	2	-
Carel EVD EVO Twin	-	-	1	2	2	3	-	1	-	2
Carel EVD EVO Display	1	2	2	2	3	3	1	1	2	2
Carel NTC Temp Sensors	1	2	3	4	5	6	1	2	2	4
Carel Transducers	1	2	3	4	5	6	1	2	2	4
Meanwell Power Supply	1	1	1	1	1	1	1	1	1	1
24-230V Relays Complete	1	2	3	4	5	6	4	4	8	8
Misc. Parts (Jumpers, Terminal Blocks, Fuses, Etc)	✓	✓	✓	✓	✓	✓	✓	✓	✓	✓
Enclosure, Panduit, Din Rail, Labels & Wire	✓	✓	✓	✓	✓	✓	✓	✓	✓	✓
EZE I/O Mk2-M1 Module Kit	1	1	1	1	1	1	1	1	1	1
EZE I/O Module Subscription (12 Months)	1	1	1	1	1	1	1	1	1	1
Carel NTC Temp Sensors	-	-	-	-	-	-	1	2	2	2
Carel Transducers	-	-	-	-	-	-	1	2	2	2
CTDC 200A	1	1	1	1	1	1	1	1	1	1
Backup Batteries	2	2	2	2	2	2	2	2	2	2
Watt Node Module	1	1	1	1	1	1	1	1	1	1
CT, ACT-0705-250A	3	3	3	3	3	3	3	3	3	3
EZE Expander	-	-	1	1	1	1	-	-	-	-
Supply Air Transmitter	1	1	1	1	1	1	1	1	1	1
Return Air Transmitter	1	1	1	1	1	1	1	1	1	1
Carel NTC Temp Sensors (Additional for monitoring)	1	2	3	4	5	6	-	-	-	-
Carel Transducers (Additional for monitoring)	1	2	3	4	5	6	-	-	-	-

PACKAGES

STANDARD

Contains Carel Drivers, temperature and pressure sensors to control each valve, DC power supply, relays and all necessary terminal blocks and fuses. All parts are contained within a lightweight composite enclosure. For the EEV + Pump Down Models only, the standard package also includes the **Basic Monitoring Package** shown below (EZE monitoring, 12 month subscription, etc.) and additional sensors to measure liquid line pressures, liquid line temperatures and subcooling.

BASIC MONITORING PACKAGE

Includes basic EZE monitoring with a 12 month EZE subscription. Enables one phase current monitoring and remote data streaming of valve position, suction temperatures, suction pressures, and superheat. Battery backup and alarm indications are also included.

ELECTRICAL MONITORING PACKAGE

Contains a Watt Node Module and CT's for power consumption measurements as well individual readings of voltage, current and power factor. Must be used in conjunction with the **Basic Monitoring Package** or be a Pump Down Model.

AIR SIDE MONITORING PACKAGE

Enables air side measurements of supply and return air temperature / humidity. Includes additional Carel Pressure and Temperature sensors to monitor liquid line pressure, temperature and subcooling of each circuit. Must be used in conjunction with the **Basic Monitoring Package** or be a Pump Down Model.

MODEL # LEGEND

Example: CPP-3E-0PD-0

CPP - Control Panel Pro

3E - Refers to the number of EXVs in the unit. This example contains three (3) EXVs.

0PD - Refers to the number of pump-down circuits. In this example, there are zero (0) pump down circuits.

0 - Indicates package. "0" for Standard Package features (only for EEV models), "B" for Basic Monitoring, "E" for Electrical Monitoring and "A" for Air Side Monitoring.